

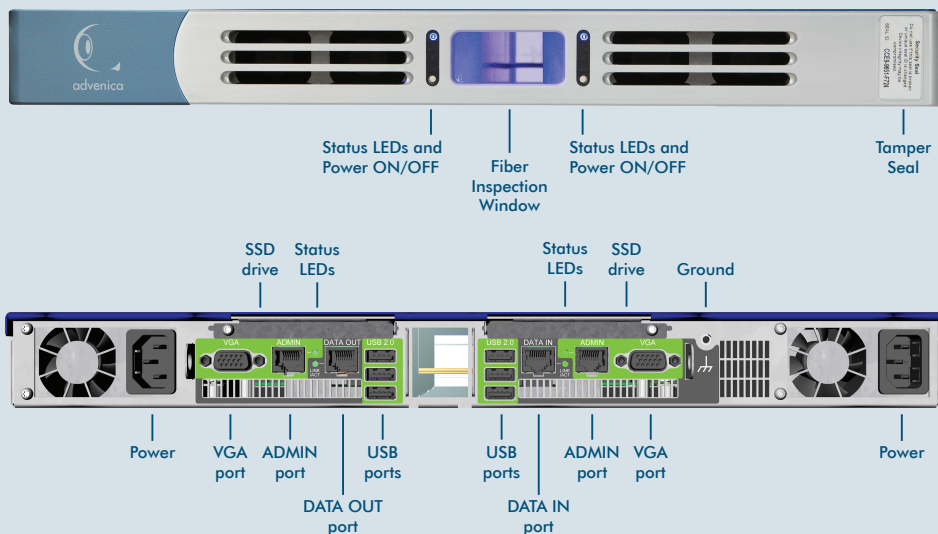


# SecuriCDS® DD1000i

## Quick Guide

# A

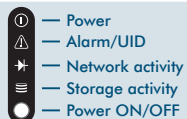
## SecuriCDS DD1000i Overview



### Package Contents

- 1 SecuriCDS DD1000i
- 2 Power Cables
- 1 Mounting Kit
- 2 Port Lock Panels
- 1 Important Information flyer

### Front Panel Status LEDs

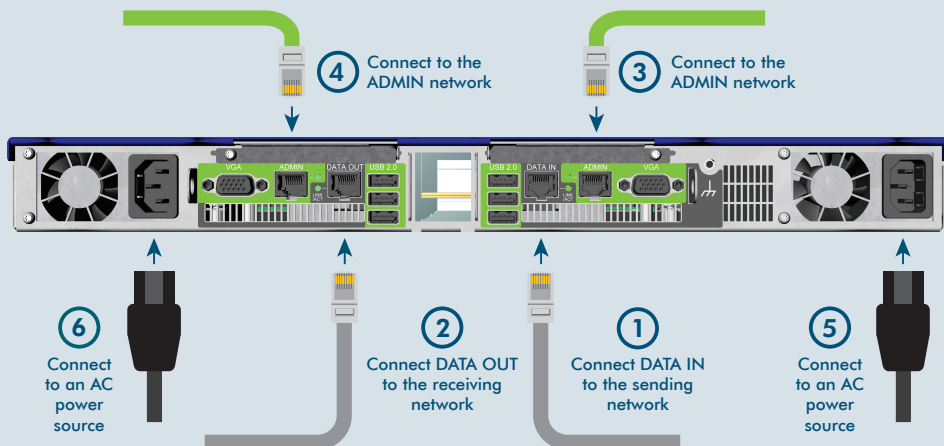


# B

## Installation



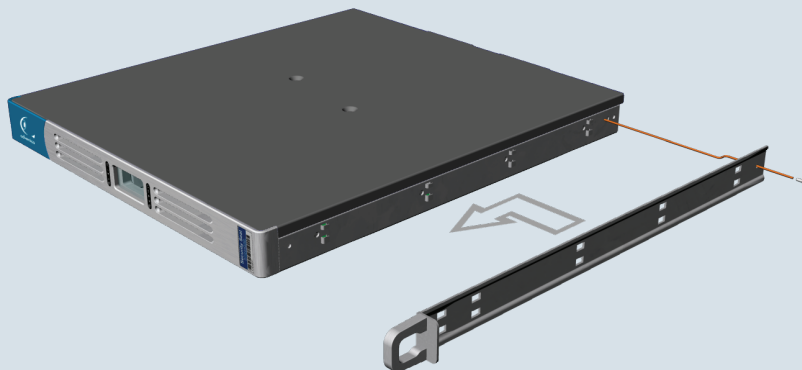
- Do **not** connect any network ports until the initial installation of the DD1000i has been completed. See the Administration Guide for further instructions.
- It is extremely important to make sure the correct network (sending) is connected to the **DATA IN** port, or data may be sent in an unintended direction.



## C

### 19" Rack Mounting

1. Fit the two parts of the outer mounting rail together and slide them apart.
2. Fit the two square knobs on both the front and rear of the outer mounting rail into the square holes on the 19" rack.
3. Push the parts of the mounting rail together and fix them with two screws.
4. Repeat steps 1-3 for the second outer mounting rail on the opposite side of the 19" rack.
5. Slide the outer mounting rails to their extended position.
6. Fit the angle brackets along the side of the DD1000i into the corresponding holes on the inner mounting rail.



7. Slide the inner mounting rail towards the front of the DD1000i.
8. Lock the inner mounting rail into place by tightening the screw at the rear of the rail.
9. Repeat steps 6-8 for the second inner mounting rail on the opposite side of the DD1000i.
10. Fit the inner mounting rails on the DD1000i into the outer mounting rails in the 19" rack and slide the DD1000i all the way to the rear.
11. Fix the DD1000i into position with a screw on each side.

## D

### Further Information

Contact Advenica Customer Services ([helpdesk@advenica.com](mailto:helpdesk@advenica.com)) if further information is required.

